

Circuit Level Impact

- The overall 2017 NSC matric pass rate of the ten secondary schools in Insikazi was **81.5%**, ahead of the national average of 75.1% and the provincial average of 74.8%.
- In 2012, the Insikazi pass rate was 65.3%, so **real progress** has been made.
- Out of the 68 school circuits in Mpumalanga, Insikazi **climbed up eight positions** in 2017, to 19th position, a remarkable feat.
- Insikazi signed up **1,178** learners to write matric (learner quantum is ranked 9th out of 68 circuits in MP). This is significant, as many circuits face the issue of drop-outs and 'gate-keeping' or removing poor performing learners in Grade 11, in order to inflate results.
- **Support** of the Insikazi Circuit Office continues, optimising its workflow, data analysis, productivity and morale.
- This year Circuit Level mentorship was extended to **three additional Circuit Managers** (White River, White Hazy 1 and White Hazy 2)

Uplands Outreach works in **one school circuit** in Mpumalanga for maximum impact. We work collaboratively at the circuit level, and with school leaders, teachers and learners in an empirically-proven approach known as 'systemic alignment'.

Learner Impact

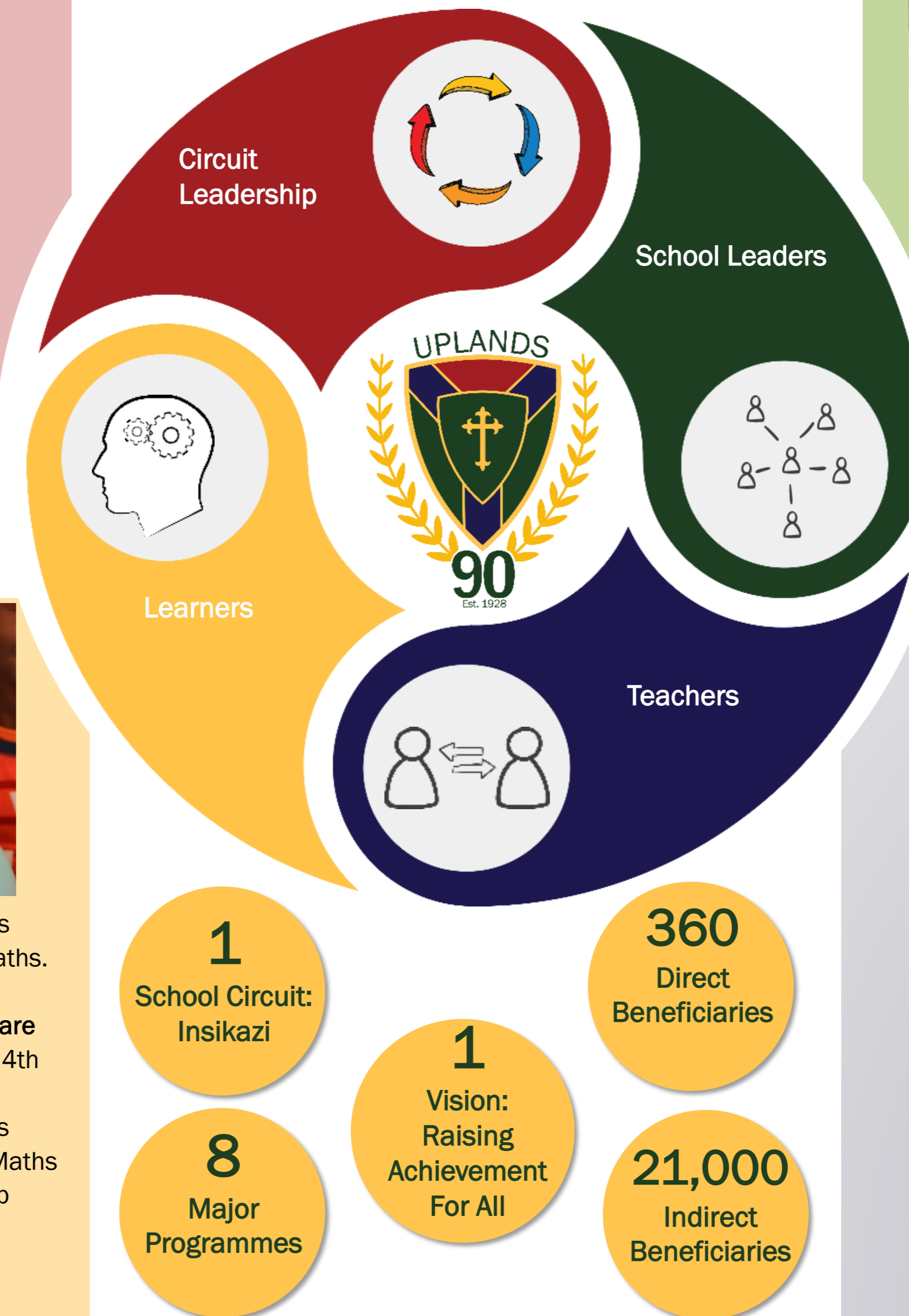
- At Uplands College, SMILE achieved another year of **successful results** in conversational English: the summative test average of the Grade 4 learners involved in SMILE was **73.6%**, up from the baseline of 61.3%.
- Eight L4E Saturday Maths graduates are active on our Uplands school campus. Six are completing **BEd degrees (UNISA)** in Maths. These students are our future Maths teachers!
- Of the original 50 Learners for Excellence Maths learners, **46 are still enrolled** in tertiary institutions (most will be entering their 4th year in 2018) – a remarkable achievement against all odds.
- A sample of Grade 6 learners in the Intermediate Phase Maths programme revealed an **increase of 15 percentage points** in Maths over an eight-month period in 2017, whereas the control group remained flat.



For more information about Uplands Outreach, please visit our [website](#).

What difference did we make?

2017 Impact Metrics Summary
From Uplands Outreach



School Leader Impact



- **32 new school leaders** were hand-selected to participate in the Uplands Outreach School Leaders for Excellence Programme, in partnership with the University of Johannesburg .
- Zikodze Secondary School maintained its **first position** in the circuit, with a pass rate of 98.36% and an exceptional Maths pass rate of 94.7%
- Zikodze is ranked 27th out of 551 secondary schools in Mpumalanga. These results are **commendable**, as in 2011, Zikodze's first matric class had a 20% pass rate.
- Insikazi Circuit Manager, Mandrew Nyambi, thanked his school leaders for their **sustained performance** in 2017.

Our work is **evidence-based, measurable, and collaborative**. Our vision is to raise achievement for all. We could not undertake this work without the support of all our [donors](#) – thank you!

Teacher Impact

- **55 teachers** in our new Standard Bank Primary School Teacher Development Programme improved their Maths content knowledge significantly: the midline average for Foundation Phase teachers was **96% for Maths**, and **84%** for Intermediate Phase teachers (ahead of [national research](#) on Grade 6 teachers showing that only 32% have desirable knowledge levels).
- Microsoft Digital Literacy knowledge of the cohort improved by **28 percentage points** (averaging 85.5% on the summative test).
- 53 teachers **successfully completed** an online Stanford University numeracy MOOC (Massive Open Online Course) by Dr Jo Boaler, the internationally renowned Maths educator.
- **Teaching confidence rose** to 89%, off a base of 45.5%.
- Our Maths partner teachers in Insikazi once again **outperformed** the national Maths pass rate (51.9%) and the MP average of 47.8% at **57.4%**.
- The Maths partner teachers in Insikazi alone produced 24 Maths distinctions, up from 17 last year.
- An additional 24 teachers participated in a year-long Digital Literacy class. The results: **100% pass rate**, 84% summative test (up from 43% baseline test), 99.6% attendance, and 90% confidence rating, up from 32%.

Uplands Outreach: Raising Achievement for All